



PROJECT		REF		REV	ITEM CODE	
LOCATION		DATE			PAGE	

SANITARY WARE SPECIFICATION SHEET

<p>Item Descriptions</p> <p>Dimensions</p> <p>Model</p> <p>Finish / Material</p> <p>Country of origin</p> <p>Manufacturer</p> <p>Supplier</p> <p>Contact Tel/Fax</p> <p>E-mail</p> <p>Website</p>	<p>GROHE (Germany) "Essence" Chrome plated 1/2" M-size three-hole basin mixer supplied with one pair of stainless steel wire braided water inlet flexible hose</p> <p>Refer to drawing</p> <p>20296001</p> <p>Chrome Plated</p> <p>Germany</p> <p>GROHE Limited</p> <p>Acme Sanitary Ware Co. Ltd Mr. Eric Wong/ Mr. Don Yuen</p> <p>(852) 2388-7171 / (852) 2710-8012</p> <p>acme@acmesanitary.com.hk</p> <p>www.acmesanitary.com.hk</p>	<p>Illustration/ Drawing</p> <p>Technical drawing showing dimensions: spout height 193mm, spout angle 20°-40°, spout width 114mm, handle height 160mm, handle width max.30mm, base diameter Ø34mm, mounting hole diameter Ø48mm, mounting hole spacing M28x1,5, total width 200mm (+140/-60), total height max.300mm, base diameter Ø63mm, base height 40-53mm, connection G1 1/4, max.180mm.</p> <p>Icons: GROHE EcoJoy, GROHE StarLight, AQUAGUIDE</p>
<p>"Essence"</p> <p>Three-hole basin mixer 1/2" M-Size</p> <ul style="list-style-type: none"> metal lever ceramic headparts 1/2", 90° GROHE StarLight chrome finish GROHE EcoJoy mousseur 5.7 l/min GROHE AquaGuide adjustable mousseur spout with mousseur pop-up waste set 1 1/4" pressure-proof, flexible connection hoses between spout and side valves union nut 1/2" x 10.5 mm <p>GROHE ESSENCE</p> <p>UNDERSTATED ELEGANCE</p> <p>Classic lifestyle, gently interpreted. For people who are attracted by clear, visually pleasing designs, GROHE Essence brings aesthetics without pretension. Complete bathrooms in this range use balanced, modern styling and create space for inventive furnishing ideas and innovative technologies.</p>		

Note:

* All information of the above is for the reference only. No prior notice is made if any changes.



Acme Sanitary Ware Co Ltd

Acme Building, 22-28 Nanking Street, Kowloon, Hong Kong
Tel: 2388 7171 Fax: 2710 8012
E-mail: acme@acmesanitary.com.hk
Website: www.acmesanitaryware.com.hk

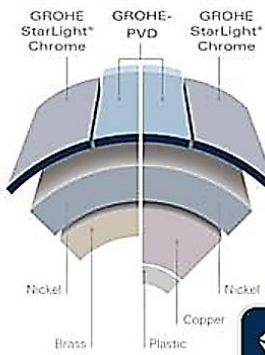


Pure Freude
an Wasser

PROJECT		REF		REV	ITEM CODE	
LOCATION		DATE			PAGE	

SANITARY WARE SPECIFICATION SHEET

GROHE StarLight®



GROHE ECOJOY

Save precious resources and enjoy 100 % water comfort.



GROHE STARLIGHT

Made-to-last surfaces ranging from precious matt to shiny like a diamond.



AQUAGUIDE

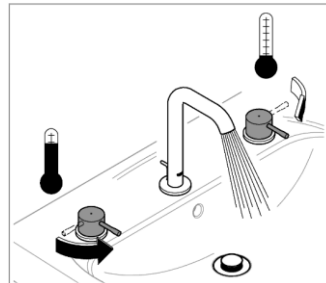
Variable spout end for adjustment of water flow.



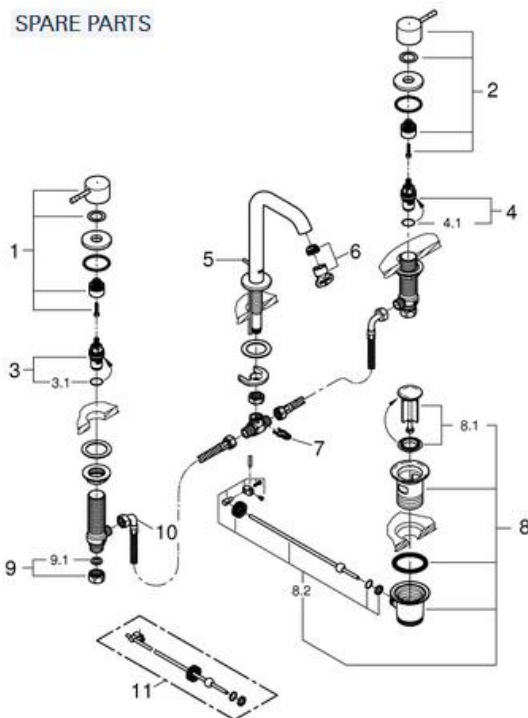
GROHE surface hardness



GROHE scratch resistance



SPARE PARTS



Pos.-nr.	Prod. description	Order-nr.
1	Handle	48272000
2	Handle	48273000
3	Ceramic headpart, 1/2"	45882000
3.1	O-ring Ø 18.2 x Ø 1.7	0392400M
4	Ceramic headpart, 1/2"	45883000
4.1	O-ring Ø 18.2 x Ø 1.7	0392400M
5	Pop-up rod	65196000
6	Mousseur	48270000
7	Fixing clamp	6554100M
8	Waste set 1 1/4"	28910000
8.1	Plug for waste set 1 1/4"	07182000
8.2	Eccentric rod	07052000
9	Coupling nut 1/2"	1290100M
9.1	Fibre seal Ø 18,5 x Ø 12 x 2	0138900M
10	Flexible connection hose	45704000
11	Ball rod	07341000*

* Optional accessories

Note:

* All information of the above is for the reference only. No prior notice is made if any changes.



水務署

Water

香港灣仔

Immigration



, Hong Kong

電子郵件

e-mail

wsdinfo@wsd.gov.hk

電話

Telephone

2829 4355

圖文傳真

Facsimile

2824 0578

檔號

Reference

(2) in WSD 3321/16 Pt.1 T/J(1750)

13 January 2017

Approval of "GROHE" Basin Mixer

Your letter ref. WRC/1279 dated 22 December 2016 refers.

Having considered the test report ref. J18848 issued on 12 December 2016 by Nutek Systems (HK) Ltd., this Authority accepts that the fitting described below complies with, and its use when correctly installed does not contravene, the Waterworks Ordinance and Regulations.

Name of Manufacturer: Grohe AG

Country of Origin: Portugal

Brand: Grohe

Details of Fitting: 1/2" 3-hole basin mixer supplied with one pair of stainless steel wire braided water inlet flexible hose (manufactured by Neoperl GmbH. Model: Neoflex SPX DN 6 G3/8") approved by UK's WRAS under ref. 1506306

Model: 20296001

Body Markings:



Expiry Date:

6 December 2021
30 June 2020

(for mixer)
(for flexible hose)

This Authority hereby permits the use of the above fitting in fresh water plumbing systems subject to full adherence to Waterworks installation requirements. In particular, you are required to draw your customers' attention to the following requirement-

"The cold water supply to the fitting shall be drawn from the same source that supplies the hot water apparatus so as to provide a balanced pressure and to obviate the risk of scalding in the event of a restriction or failure in the water supply."

A condition of this acceptance is that the fitting to be installed shall be replicas of the sample as certified by the testing agent mentioned above and without modifications. This acceptance may be withdrawn at any time if the standard of the fitting installed fails to meet that of the approved sample or if the fitting is found to be unsuitable for use in fresh water plumbing systems.

This acceptance is only applicable to the main body of the fitting, unless other specified.

For the use of the fitting in any project, the Acceptance Reference Number at the bottom of this letter must be quoted as a means of identification of acceptance of the fitting by this Authority.

Should you have any enquiries, please contact our Engineer Mr. Terry KUNG at tel. no. 2294 2656.

Yours faithfully,

A handwritten signature in black ink, appearing to read "Chan Chung Kun".

(CHAN Chung Kun)
for Water Authority

c.c. WSD 3321/1/82] - without catalogue
 ME/MC] - with soft copy only